

MANUFACTURERS OF PRECISION-MADE  
FLEXIBLE TUBING & SPIRAL RECOIL HOSE

**ATP**<sup>®</sup>  
**ADVANCED  
TECHNOLOGY  
PRODUCTS**

[www.atp4fluid.com](http://www.atp4fluid.com)



**Imbibe™ NSF 61 - Fluidfit™ NSF 61 - Surethane™ NSF-51**  
NSF Certified Plastic Tubing and Fittings Designed  
for the Food, Beverage & Potable Water Markets





**Advanced Technology Products (ATP) opened the doors in 1990 and has been manufacturing plastic tubing and spiral/recoil hose in Ohio since the mid 90's. Initially, the products mostly served the industrial markets. Now, our Surethane™ polyurethane tubing and Imbibe™ linear low density polyethylene tubing are NSF certified to 51 and 61 respectively. In our latest catalog release we are introducing our new line of PVC tube and hose products which are also NSF 61® certified. ATP has partnered with CDC to provide Fluidfit™ plastic push to connect fittings that are also NSF 61® certified for potable water applications. We believe this combination provides a competitive one stop shopping experience for the food, beverage & potable water markets from America's heartland. Please check out the back cover of this brochure or our web site at [www.atp4fluid.com](http://www.atp4fluid.com) for our entire product line. You can trust ATP to provide affordable quality products.**

## INDEX

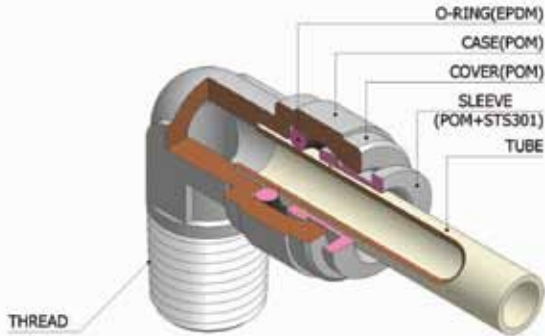
<b>Fluidfit™ specification</b> .....	<b>P3</b>
<b>Fluidfit™ inch fittings</b> .....	<b>P4</b>
<b>Fluidfit™ metric fittings</b> .....	<b>P7</b>
<b>IMBIBE™ NSF 61® Polyethylene LLDPE</b> .....	<b>P10</b>
<b>Surethane™ NSF 51® Polyurethane</b> .....	<b>P12</b>
<b>Tubing &amp; Hose Cutter</b> .....	<b>P14</b>
<b>Vinyl-Flex™ PVC Polyvinylchloride tubing</b> .....	<b>P15</b>
<b>PVC NSF 61® hose</b> .....	<b>P16</b>
<b>OETIKER® clamps &amp; tools</b> .....	<b>P17</b>
<b>Chemical resistance</b> .....	<b>P19</b>

### LIMITED WARRANTY

Advanced Technology Products expressly excludes all warranties, guarantees and representations, expressed or implied, including but not limited to warranties of merchantability, material, workmanship, design and suitability for a specified or intended purpose. Products shall be free from defects in material and workmanship for a period of one (1) year after shipment. If the product purchased is defective in any way during the one (1) year period, please contact ATP for an RGA number to return the product. No unauthorized returns will be accepted. Ship product prepaid to ATP for a full evaluation. If the product is found to be defective, ATP will repair or replace the product at no charge to the customer at ATP's sole discretion.

# Fluidfit

## Material/Structure



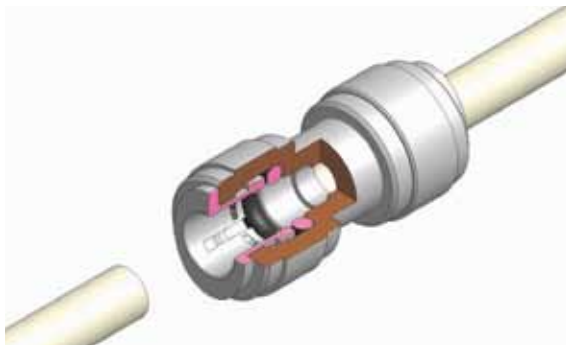
## Applications and Features

Fluidfit Products are designed for water, food and air contact but can be used with selected gases, vacuum & liquids. A single action allows the tube to release and connect easily, saving time and expense. Fluidfit products are made from NSF approved non-toxic materials. Various uses depending on the user's environment and application

## Color Codes

HUT 0606-G G(Gray)	HUT 0606-B B(Black)	HUT 0606-W W(Natural)
* Stock	* 3 weeks	* Special order

## Connection & Disconnection



▲ Use a tube cutter for a square cross section

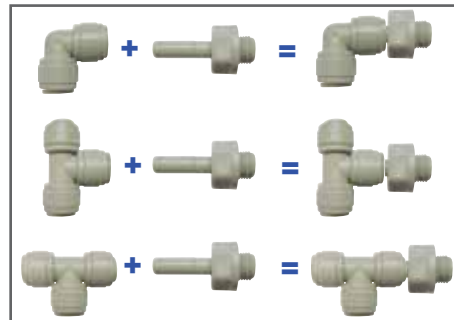
## Specifications

Fluid Type	Water, Beverages	
Tube Type	Polyethylene(PE), Polyamid(PA) and Polyurethane (PU)	
Temperature	Working Pressure	
	5/32" (4mm) - 5/16" (8mm) 3/8", 1/2", 10mm, 12mm	
1° C/34° F	16 Bar/232 PSI	16 Bar/232 PSI
25° C/77° F	16 Bar/232 PSI	16 Bar/232 PSI
70° C/158° F	10 Bar/145 PSI	10 Bar/145 PSI

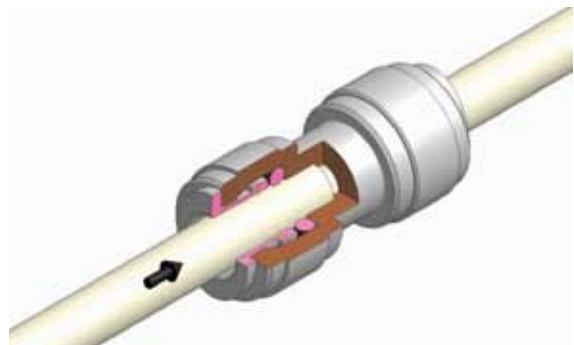
## Maximum Torque Values for BSP, BSPT, & NPT Plastic Threads

Threads	1/8	1/4	3/8	1/2
Max. Torque N.m.	1.5N.m	1.5N.m	3.0N.m	3.0N.m
Max. Torque LBF.	1.1LBF.	1.1LBF.	2.21LBF.	2.21LBF.

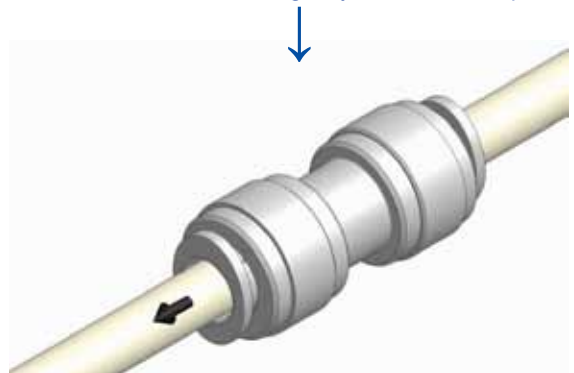
## Adaptability



▲ To remove the tube press and hold collet while pulling out tube



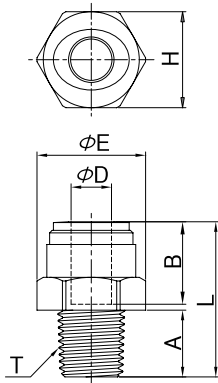
▲ Insert tube into the fitting fully to the tube stop



▲ Before use, pull the tube to check that it is secure

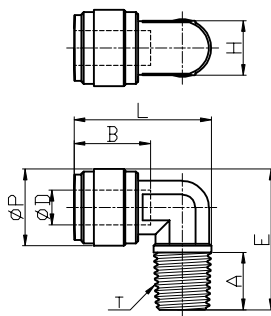
Fittings designed for the food, beverage & potable water markets

**HPC**  
Straight Adaptor



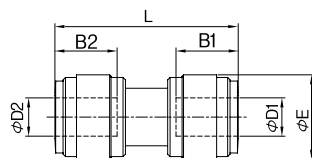
MODEL(inch)	ØD	T(NPT,F)	A	B Tube Deep	ØE	H(inch)	L
HPC 5/32-N01	5/32	1/8	9.1	14.7	17.8	15.8(5/8)	22.2
HPC 5/32-N02	5/32	1/4	13.2	14.7	17.8	15.8(5/8)	25.3
HPC 3/16-N01	3/16	1/8	9.1	15.0	17.8	15.8(5/8)	22.4
HPC 3/16-N02	3/16	1/4	13.2	15.0	17.8	15.8(5/8)	25.5
HPC 1/4-N01	1/4	1/8	9.1	16.9	17.8	15.8(5/8)	27.0
HPC 1/4-N02	1/4	1/4	13.2	16.9	17.8	15.8(5/8)	27.0
HPC 1/4-N03	1/4	3/8	13.8	16.9	21.4	19.0(3/4)	26.1
HPC 5/16-N01	5/16	1/8	9.1	17.5	21.4	19.0(3/4)	28.4
HPC 5/16-N02	5/16	1/4	13.2	17.5	21.4	19.0(3/4)	27.9
HPC 5/16-N03	5/16	3/8	13.8	17.5	21.4	19.0(3/4)	26.5
HPC 5/16-N04	5/16	1/2	17.8	17.5	25.0	22.2(7/8)	33.5
HPC 3/8-N01	3/8	1/8	9.1	20.2	23.0	20.6(3/4)	30.4
HPC 3/8-N02	3/8	1/4	13.2	20.2	23.0	20.6(3/4)	34.3
HPC 3/8-N03	3/8	3/8	13.8	20.2	23.0	20.6(3/4)	29.6
HPC 3/8-N04	3/8	1/2	17.8	20.2	25.0	22.2(7/8)	33.9
HPC 1/2-N03	1/2	3/8	13.8	25.1	27.4	25.4(1)	38.4
HPC 1/2-N04	1/2	1/2	17.8	25.1	27.4	25.4(1)	37.9

**HPL**  
Rigid Elbow



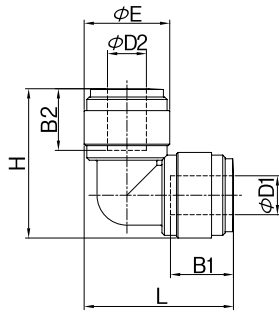
MODEL(inch)	ØD	ØP	T(NPT,F)	A	B Tube Deep	ØE	H(inch)	L
HPL 3/16-N01	3/16	15.5	1/8	9.1	15.0	26.4	11.0(7/16)	25.6
HPL 1/4-N01	1/4	15.5	1/8	9.1	16.9	26.4	11.0(7/16)	25.6
HPL 1/4-N02	1/4	15.5	1/4	13.2	16.9	31.9	11.0(7/16)	27.0
HPL 1/4-N03	1/4	15.5	3/8	13.8	16.9	32.7	11.0(7/16)	28.9
HPL 5/16-N02	5/16	20.0	1/4	13.2	17.5	35.2	14.3(9/16)	31.4
HPL 5/16-N03	5/16	20.0	3/8	13.8	17.5	35.8	14.3(9/16)	33.5
HPL 3/8-N02	3/8	20.0	1/4	13.2	20.2	35.2	14.3(9/16)	31.8
HPL 3/8-N03	3/8	20.0	3/8	13.8	20.2	35.8	14.3(9/16)	33.9
HPL 1/2-N03	1/2	23.6	3/8	13.8	25.1	39.3	17.4(11/16)	39.7
HPL 1/2-N04	1/2	23.6	1/2	17.8	25.1	43.3	17.4(11/16)	41.5

**HUC**  
Equal & Reducer Straight



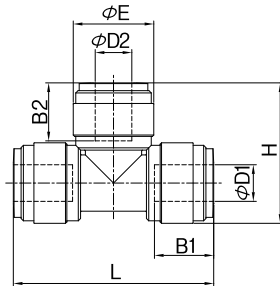
MODEL(inch)	ØD1	ØD2	B1 Tube Deep	B2 Tube Deep	ØE	L
HUC 5/32-5/32	5/32	5/32	14.7	14.7	13.3	31.8
HUC 3/16-3/16	3/16	3/16	15.0	15.0	13.8	32.5
HUC 1/4-1/4	1/4	1/4	16.9	16.9	15.5	36.2
HUC 5/16-1/4	5/16	1/4	16.9	16.9	17.6	38.8
HUC 5/16-5/16	5/16	5/16	17.5	17.5	17.6	38.2
HUC 3/8-3/8	3/8	3/8	20.2	20.2	20.1	42.9
HUC 1/2-1/2	1/2	1/2	25.1	25.1	23.6	53.2

**HUL**  
Equal Elbow



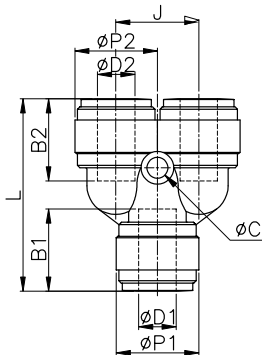
MODEL(inch)	ØD1	ØD2	B1 Tube Deep	B2 Tube Deep	ØE	L	H
HUL 5/32-5/32	5/32	5/32	14.7	14.7	13.3	24.5	24.5
HUL 3/16-3/16	3/16	3/16	15.0	15.0	13.8	25.5	25.5
HUL 1/4-1/4	1/4	1/4	16.9	16.9	15.5	28.8	28.8
HUL 5/16-5/16	5/16	5/16	17.5	17.5	17.6	30.7	30.7
HUL 3/8-3/8	3/8	3/8	20.2	20.2	20.1	35.9	35.9
HUL 1/2-1/2	1/2	1/2	25.1	25.1	23.6	43.4	43.4

**HUT**  
Equal Tee



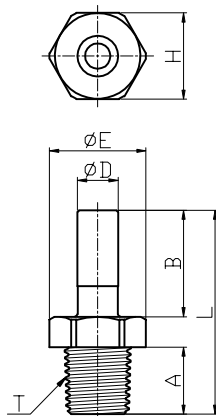
MODEL(inch)	ØD1	ØD2	B1 Tube Deep	B2 Tube Deep	ØE	H	L
HUT 5/32-5/32	5/32	5/32	14.7	14.7	13.2	24.5	35.8
HUT 3/16-3/16	3/16	3/16	15.0	15.0	13.8	25.5	37.2
HUT 1/4-1/4	1/4	1/4	16.9	16.9	15.5	28.8	42.0
HUT 5/16-5/16	5/16	5/16	17.5	17.5	17.6	30.7	43.8
HUT 3/8-3/8	3/8	3/8	20.2	20.2	20.0	35.9	51.8
HUT 1/2-1/2	1/2	1/2	25.6	25.6	24.6	43.4	63.8

**HUY**  
Equal Y



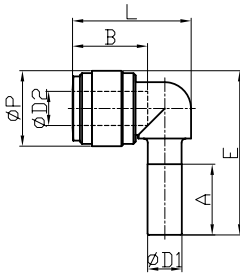
MODEL(inch)	ØD1	ØD2	B1 Tube Deep	B2 Tube Deep	ØP1	ØP2	L	J	ØC
HUY 5/32-5/32	5/32	5/32	14.7	14.7	13.8	13.8	33.7	13.5	3.3
HUY 3/16-3/16	3/16	3/16	15.0	15.0	13.8	13.8	34.1	13.5	3.3
HUY 1/4-1/4	1/4	1/4	16.9	16.9	15.5	15.5	38.8	15.5	3.3
HUY 5/16-5/16	5/16	5/16	17.5	17.5	17.6	17.6	41.0	17.6	4.5
HUY 3/8-3/8	3/8	3/8	20.2	20.2	20.0	20.0	46.4	20.0	4.5
HUY 1/2-1/2	1/2	1/2	25.1	25.1	23.0	23.0	56.8	23.0	4.5

**HCJ**  
Stem Adaptor



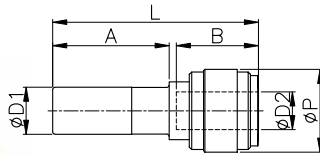
MODEL(inch)	ØD	T(NPT,F)	A	B	ØE	H(inch)	L
HCJ 5/32-N01	5/32	1/8	9.1	18.0	14.1	12.7(1/2)	33.1
HCJ 5/32-N02	5/32	1/4	13.2	18.0	17.8	15.8(5/8)	37.2
HCJ 3/16-N01	3/16	1/8	9.1	18.0	14.1	12.7(1/2)	33.1
HCJ 1/4-N01	1/4	1/8	9.1	19.0	14.1	12.7(1/2)	34.1
HCJ 1/4-N02	1/4	1/4	13.2	19.0	17.8	15.8(5/8)	38.2
HCJ 5/16-N01	5/16	1/8	9.1	20.0	14.1	12.7(1/2)	35.1
HCJ 5/16-N02	5/16	1/4	13.2	20.0	17.8	15.8(5/8)	39.2
HCJ 5/16-N03	5/16	3/8	13.8	20.0	21.5	19.0(3/4)	40.3
HCJ 3/8-N02	3/8	1/4	13.2	23.0	17.8	15.8(5/8)	42.2
HCJ 3/8-N03	3/8	3/8	13.8	23.0	21.5	19.0(3/4)	43.3
HCJ 1/2-N03	1/2	3/8	13.8	27.0	21.5	19.0(3/4)	47.3
HCJ 1/2-N04	1/2	1/2	17.8	27.0	26.8	23.8(15/16)	51.3

## HLJ Stem Elbow



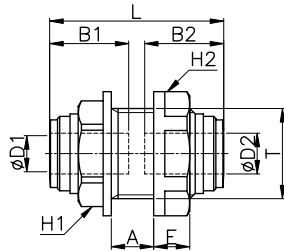
MODEL(inch)	ØD1	ØD2	ØP	A	B Tube Deep	E	L
HLJ 5/32-5/32	5/32	5/32	13.2	18.0	14.7	30.1	21.9
HLJ 3/16-3/16	3/16	3/16	13.8	18.5	15.0	31.4	22.5
HLJ 1/4-1/4	1/4	1/4	15.5	21.0	16.9	34.8	25.1
HLJ 5/16-5/16	5/16	5/16	17.6	22.5	17.5	38.3	27.7
HLJ 3/8-1/4	3/8	1/4	15.5	24.8	16.9	38.6	25.1
HLJ 3/8-5/16	3/8	5/16	20.0	24.8	17.5	43.2	31.0
HLJ 3/8-3/8	3/8	3/8	20.0	24.8	20.2	43.2	31.4
HLJ 1/2-1/2	1/2	1/2	23.6	29.5	25.1	51.2	39.2

## HGJ Tube Reducer



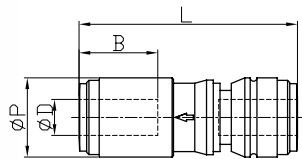
MODEL(inch)	ØD1	ØD2	ØP	L	A	B Tube Deep
HGJ 5/16-1/4	5/16	1/4	15.5	40.6	22.5	16.9

## HMM Bulkhead Union



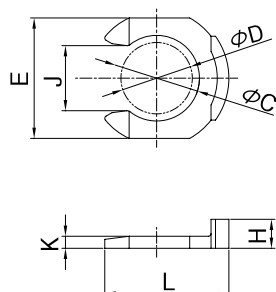
MODEL(inch)	ØD1	ØD2	T	L	E	A	B1 Tube Deep	B2 Tube Deep	H1 Hex	H2 Hex
HMM 5/32-5/32	5/32	5/32	M15*1.5P	31.4	6.5	7.2	14.7	14.7	17	18
HMM 1/4-1/4	1/4	1/4	M17*1.5P	34.2	7.0	7.9	16.9	16.9	19	21
HMM 5/16-5/16	5/16	5/16	M20*1.75P	38.5	8.0	9.4	17.5	17.5	21	25.5
HMM 3/8-3/8	3/8	3/8	M24*1.75P	42.4	8.5	10.8	20.2	20.2	24	28.5
HMM 1/2-1/2	1/2	1/2	M27*2.0P	51.8	9.0	16.4	25.1	25.1	27	31

## HCVU Single non-return valve



MODEL(inch)	ØD1	ØP	L	B Tube Deep
HCVU 1/4-1/4	1/4	15.5	45.5	16.1
HCVU 5/16-5/16	5/16	17.6	48.6	17.5
HCVU 3/8-3/8	3/8	20.0	57.8	19.4
HCVU 1/2-1/2	1/2	23.6	67.9	24.1

## HCP Clip

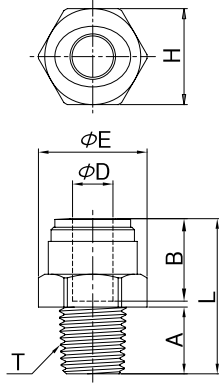


MODEL(inch)	ØD1	ØC	E	L	H	J	K
HCP 5/32	5/32	6.2	10.2	11.0	2.8	4.3	1.1
HCP 3/16	3/16	6.2	10.2	11.0	2.8	4.3	1.1
HCP 1/4	1/4	8.0	11.6	11.6	3.1	6.4	1.3
HCP 5/16	5/16	9.6	13.5	13.9	3.3	7.3	1.4
HCP 3/8	3/8	11.8	16.0	16.4	3.4	9.2	1.4
HCP 1/2	1/2	14.4	19.0	19.0	3.6	11.1	1.4

**HPC**  
Straight Adaptor



Non stock  
Deliver in 3 weeks

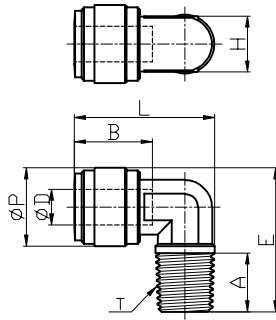


MODEL(mm)	ØD	T(BSPT,R)	A	B Tube Deep	ØE	H(Hex)	L
HPC 06R01	06	1/8	9.1	16.1	18.5	17.0	26.2
HPC 06R02	06	1/4	13.1	16.1	18.5	17.0	26.7
HPC 08R01	08	1/8	9.1	17.5	21.0	19.0	28.1
HPC 08R02	08	1/4	13.1	17.5	21.0	19.0	30.6
HPC 10R03	10	3/8	13.5	20.1	23.2	21.0	28.8
HPC 10R04	10	1/2	16.3	20.1	24.4	21.0	32.1
HPC 12R03	12	3/8	13.5	24.7	26.5	24.0	32.2
HPC 12R04	12	1/2	16.3	24.7	26.5	24.0	34.3

**HPL**  
Rigid Elbow



Non stock  
Deliver in 3 weeks

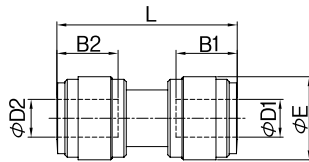


MODEL(mm)	ØD	ØP	T(BSPT,R)	A	B Tube Deep	E	H	L
HPL 06R01	06	15.0	1/8	9.1	16.1	25.6	10.0	25.4
HPL 06R02	06	15.0	1/4	13.1	16.1	30.6	10.0	27.0
HPL 08R02	08	17.6	1/4	13.1	17.5	32.2	13.0	31.5
HPL 10R03	10	20.0	3/8	13.5	20.1	35.7	14.0	33.9
HPL 12R04	12	23.0	1/2	16.3	24.7	41.4	17.0	40.7

**HUC**  
Equal & Reducer Straight



Non stock  
Deliver in 3 weeks

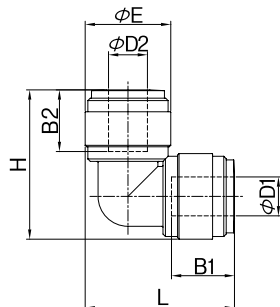


MODEL(mm)	ØD1	ØD2	B1 Tube Deep	B2 Tube Deep	ØE	L
HUC 0404	04	04	14.7	14.7	13.2	31.8
HUC 0606	06	06	16.1	16.1	15.0	35.2
HUC 0808	08	08	17.5	17.5	17.6	38.2
HUC 1010	10	10	20.1	20.1	20.0	42.7
HUC 1212	12	12	24.7	24.7	23.0	52.4

**HUL**  
Equal Elbow

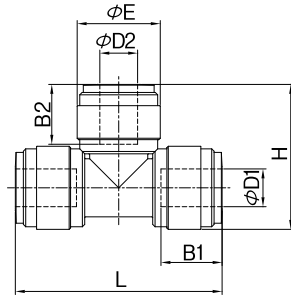


Non stock  
Deliver in 3 weeks



MODEL(mm)	ØD1	ØD2	B1 Tube Deep	B2 Tube Deep	ØE	L	H
HUL 0404	04	04	14.7	14.7	13.2	24.5	24.5
HUL 0606	06	06	16.1	16.1	15.0	27.6	27.6
HUL 0808	08	08	17.5	17.5	17.6	30.7	30.7
HUL 1010	10	10	20.1	20.1	20.0	35.8	35.8
HUL 1212	12	12	24.7	24.7	23.0	43.2	43.2

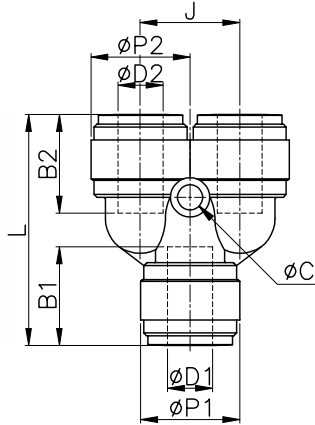
## HUT Equal Tee



Non stock  
Deliver in 3 weeks

MODEL(mm)	ØD1	ØD2	B1 Tube Deep	B2 Tube Deep	ØE	H	L
HUT 0404	04	04	14.7	14.7	13.2	24.5	35.8
HUT 0606	06	06	16.1	16.1	15.0	27.6	40.2
HUT 0808	08	08	17.5	17.5	17.6	30.7	43.8
HUT 1010	10	10	20.1	20.1	20.0	35.8	51.6
HUT 1212	12	12	24.7	24.7	23.0	43.2	63.4

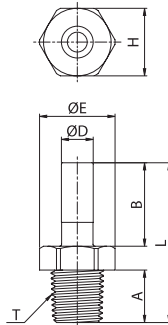
## HUY Equal Y



Non stock  
Deliver in 3 weeks

MODEL(mm)	ØD1	ØD2	B1 Tube Deep	B2 Tube Deep	ØP1	ØP2	L	J	ØC
HUY 0404	04	04	14.7	14.7	13.8	13.8	33.7	13.5	3.3
HUY 0606	06	06	16.1	16.1	15.5	15.5	38.8	15.5	3.3
HUY0808	08	08	17.5	17.5	17.6	17.6	41.0	17.6	4.5
HUY 1010	10	10	20.1	20.1	20.0	20.0	46.2	20.0	4.5
HUY 1212	12	12	24.7	24.7	23.0	23.0	56.4	23.0	4.5

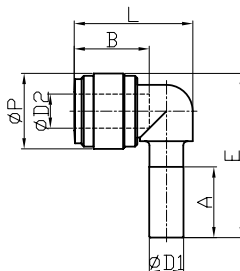
## HCJ Stem Adaptor



Non stock  
Deliver in 3 weeks

MODEL(mm)	ØD	T(BSPT,R)	A	B	ØE	H(Hex)	L
HCJ 04R01	04	1/8	9.1	18.0	14.4	13.0	33.1
HCJ 04R02	04	1/4	13.1	18.0	18.5	17.0	37.1
HCJ 06R01	06	1/8	9.1	19.5	14.4	13.0	34.6
HCJ 06R02	06	1/4	13.1	19.5	18.5	17.0	38.6
HCJ 08R01	08	1/8	9.1	21.0	14.4	13.0	36.1
HCJ 08R02	08	1/4	13.1	21.0	18.5	17.0	40.1
HCJ 08R03	08	3/8	13.5	21.0	23.0	21.0	40.5
HCJ 08R04	08	1/2	16.5	21.0	26.5	24.0	44.0
HCJ 10R02	10	1/4	13.1	24.0	18.5	17.0	43.1
HCJ 10R03	10	3/8	13.5	24.0	23.0	21.0	44.0
HCJ 10R04	10	1/2	16.5	24.0	26.5	24.0	47.0
HCJ 12R03	12	3/8	13.5	28.0	23.0	21.0	48.0
HCJ 12R04	12	1/2	16.5	28.0	26.5	24.0	51.0

## HLJ Stem Elbow



Non stock  
Deliver in 3 weeks

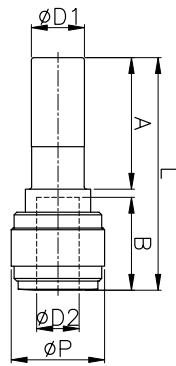
MODEL(inch)	ØD1	ØD2	ØP	A	B Tube Deep	E	L
HLJ 0404	04	04	13.2	18.0	14.7	30.1	21.9
HLJ 0606	06	06	15.5	21.0	16.1	34.8	25.1
HLJ 0808	08	08	17.6	22.5	17.5	38.3	27.7
HLJ 1010	10	10	20.0	24.8	20.1	43.2	31.1
HLJ 1212	12	12	23.6	29.5	24.7	51.2	39.0



## HGJ Tube Reducer



Non stock  
Deliver in 3 weeks

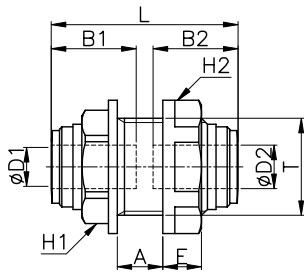


MODEL(mm)	ØD1	ØD2	ØP	L	A	B Tube Deep
HGJ 0604	06	04	10.5	36.7	21.0	14.7
HGJ 0806	08	06	10.5	40.6	22.5	16.1
HGJ 1008	10	08	12.5	43.8	24.8	17.5

## HMM Bulkhead Union



Non stock  
Deliver in 3 weeks



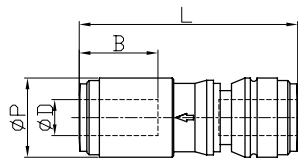
MODEL(mm)	ØD1	ØD2	T	L	E	A	B1 Tube Deep	B2 Tube Deep	H1 Hex	H2 Hex
HMM 0404	04	04	M15*1.5P	31.4	6.5	7.2	14.7	14.7	17	18
HMM 0606	06	06	M17*1.5P	34.2	7.0	7.9	16.1	16.1	19	21
HMM 0806	08	06	M20*1.75P	38.1	8.0	9.4	17.5	17.5	21	25.5
HMM 0808	08	08	M20*1.75P	38.5	8.0	9.4	17.5	17.5	21	25.5
HMM 1010	10	10	M24*1.75P	42.2	8.5	10.8	20.1	20.1	24	28.5
HMM 1212	12	12	M27*2.0P	51.4	9.0	16.4	24.7	24.7	27	31

## HCVU

Single non-return valve



Non stock  
Deliver in 3 weeks

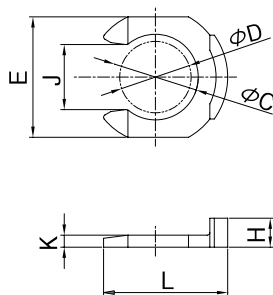


MODEL(mm)	ØD1	ØD2	L	B Tube Deep
HCVU 0606	06	15.5	45.5	16.1
HCVU 0808	08	17.6	48.6	17.5
HCVU 1010	10	20.0	57.6	19.4
HCVU 1212	12	23.6	67.9	23.9

## HCP Clip



Non stock  
Deliver in 3 weeks

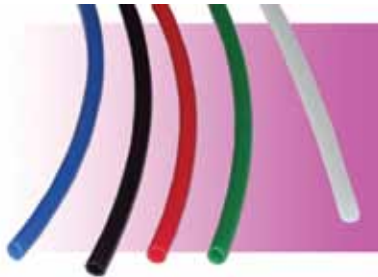


MODEL(metric)	ØD	ØC	E	L	H	J	K
HCP 04	04	6.2	10.2	11.0	2.8	4.3	1.1
HCP 06	06	8.0	11.6	11.6	3.1	6.4	1.3
HCP 08	08	9.6	13.5	13.9	3.3	7.3	1.4
HCP 10	10	11.8	16.0	16.4	3.4	9.2	1.4
HCP 12	12	14.4	19.0	19.0	3.6	11.1	1.4

- ▲ Use each product only for recommended applications.
- ▲ Fluidfit™ Products are originally designed for use with water, food, or beverage products. For other chemicals refer to chemical compatibility data (chart) provided. For unlisted chemicals or media please contact us.
- ▲ Do not disassemble or modify the products. It may cause malfunction, leakage, or failure and voids the product warranty.
- ▲ Do not use the products at temperatures exceeding 80°C. This may cause malfunction, leakage, or failure.
- ▲ Do not use pipe glue or other liquid sealants other than PTFE Tape when sealing threaded fittings.
- ▲ Do not press collet toward body or attempt to pull out tubing when the line is pressured.
- ▲ Use locking clips to prevent unintended separation.
- ▲ When tightening threaded fittings, refer to torque data provided. Over torque may damage the fitting and cause leak or failure.
- ▲ Before disassembling tube connection, verify that the line pressure has been relieved.
- ▲ Fluidfit™ products maybe modified or redesigned as to market requirement for improvement with out notice, therefore the actual product may differ from pictures provided.

# Tubing designed for the food, beverage & potable water markets

## IMBIBE™ NSF 61® LLDPE Tubing



IMBIBE™ exceeds FDA expectations with its NSF 61® Certification for drinking water applications. Manufactured from 100% non-toxic ingredients, IMBIBE™ is perfect for drinking water, beverage and food applications. With a complete range of sizes, colors and packaged lengths, IMBIBE™ is the perfect one stop shop

tubing option. Include NSF 61® Certified Fluidfit™ Push-to-Connect fittings and complete your assembly needs.

### Package Lengths

- A = 100'
- B = 250' (Non-Stock)
- C = 500'
- D = 1000'

### Part Numbering System

**DWPE 14 A NA**

Polyethylene  
Tubing O.D.  
Package Length  
Tubing color  
Insert color designation into part number when ordering

### Stock Color Chart: • = Stock, x = Non Stock

DWPE	BK	B	G	NA	R	W	Y
4mm/ 5/32	•	•	x	•	•	x	x
1/4	•	•	•	•	•	•	•
3/8	•	•	•	•	•	•	•
1/2	•	•	x	•	•	•	x
6mm	•	•	x	•	•	x	x
8mm/ 5/16	•	•	x	•	•	x	x
10mm	•	•	x	•	•	x	x
12mm	•	•	x	•	•	x	x

BK = Black B = Blue G = Green NA = Natural  
R = Red W = White Y = Yellow

# ATP

### Features

- Chemically Inert
- Chemical Resistant
- Lightweight & Flexible
- Good Dielectric Properties
- Impermeable to Gases
- Meets FDA Requirements
- NSF 61® Certified

### Specifications

- Temperature Range:  
-50°F To +140°F
- Hardness: Shore A 98A  
Shore D 45D
- Vacuum Rating:  
To 28" Hg
- Tolerances:  
1/8" - 1/4" O.D. +/- .004  
3/8" - 1/2" O.D. +/- .006

### Applications

- Food & Beverage
- Pneumatic Tools
- Pneumatic Piping
- Electrical Jacketing
- Drain Lines
- Instrumentation
- Chemical Transfer
- Process Control
- Laboratories
- Water Purification
- Water Conditioners
- Ice Makers
- Misting systems

## Fractional Sizes

Size	Part number	O.D. (IN)	I.D. (IN)	Wall Thickness (IN)	Bend Radius (IN)	W.P. @ 70° F (PSI)	3:1 Burst Pressure	Package Length	Package Weight (lbs)
4MM 5/32"	DWPE04M/532A_	4mm,5/32	.106	.025	1.000	180	540	100'	.60
	DWPE04M/532B_*	4mm,5/32	.106	.025	1.000	180	540	250'	1.50
	DWPE04M/532C_	4mm,5/32	.106	.025	1.000	180	540	500'	3.00
	DWPE04M/532D_	4mm,5/32	.106	.025	1.000	180	540	1000'	6.00
1/4"	DWPE14A_	.250	.170	.040	1.250	150	450	100'	1.20
	DWPE14B_*	.250	.170	.040	1.250	150	450	250'	3.00
	DWPE14C_	.250	.170	.040	1.250	150	450	500'	6.00
	DWPE14D_	.250	.170	.040	1.250	150	450	1000'	12.00
8MM 5/16"	DWPE08M/5/16A_	.8mm,5/16	.236	.038	1.500	150	450	100'	1.50
	DWPE08M/5/16B_*	8mm,5/16	.236	.038	1.500	150	450	250'	3.75
	DWPE08M/5/16C_	8mm,5/16	.236	.038	1.500	150	450	500'	7.50
	DWPE08M/5/16D_	8mm,5/16	.236	.038	1.500	150	450	1000'	15.00
3/8"	DWPE38A_	.375	.250	.062	2.000	150	450	100'	2.30
	DWPE38B_*	.375	.250	.062	2.000	150	450	250'	5.75
	DWPE38C_	.375	.250	.062	2.000	150	450	500'	11.50
	DWPE38D_	.375	.250	.062	2.000	150	450	1000'	23.00
1/2"	DWPE12A_	.500	.375	.062	2.500	125	375	100'	3.40
	DWPE12B_*	.500	.375	.062	2.500	125	375	250'	8.50
	DWPE12C_	.500	.375	.062	2.500	125	375	500'	17.00

\_ Insert color designation into part number when ordering. \* = Non Stock Packaged Length

## Metric Sizes

Size	Part number	O.D. (mm)	I.D. (mm)	Wall Thickness (mm)	Bend Radius (mm)	W.P. @ 70° F (PSI)	3:1 Burst Pressure	Package Length	Package Weight (lbs)
6mm	DWPE06MA_	6.0	4.0	1.0	31.8	150	450	100'	1.10
	DWPE06MB_*	6.0	4.0	1.0	31.8	150	450	250'	2.75
	DWPE06MC_	6.0	4.0	1.0	31.8	150	450	500'	5.50
	DWPE06MD_	6.0	4.0	1.0	31.8	150	450	1000'	11.00
10mm	DWPE10MA_	10.0	8.0	1.0	51.0	125	375	100'	2.10
	DWPE10MB_*	10.0	8.0	1.0	51.0	125	375	250'	5.25
	DWPE10MC_	10.0	8.0	1.0	51.0	125	375	500'	10.50
	DWPE10MD_	10.0	8.0	1.0	51.0	125	375	1000'	21.00
12mm	DWPE12MA_	12.0	9.0	1.5	63.5	100	300	100'	2.50
	DWPE12MB_*	12.0	9.0	1.5	63.5	100	300	250'	6.50
	DWPE12MC_	12.0	9.0	1.5	63.5	100	300	500'	13.00

\_ Insert color designation into part number when ordering. \* = Non Stock Packaged Length

# Surethane™ NSF 51® Polyurethane (Shore A 98)

# ATP



ATP Surethane™ NSF 51® polyurethane (PUR) Shore A 98 tubing is made from the highest quality raw materials available. It is ether-based to provide excellent hydrolysis, oil and cold resistance. Surethane™ NSF 51® is strong and flexible and offers superior kink resistance compared to other tubing. It is 5 to 10 times more wear resistant and lighter in weight than any rubber hose.

ATP Surethane™ NSF 51® tubing has an outside diameter made to extremely tight tolerances. It is ideal for use with Technifit™ push-to-connect fittings, as well as barb-type and compression fittings for simple installation.

### Package Lengths

- A = 100'
- B = 250'
- C = 500'
- D = 1000'
- E = 25 Meters
- F = 100 Meters

### Part Numbering System

**PU 18 A BK**

Polyurethane  
Tubing O.D.  
Package Length  
Tubing color  
Insert color designation into  
part number when ordering

### Stock Color Chart: • = Stock, x = Non Stock

PU	BK	C	CB	CG	CR	G	GY	LB	LG	NB	OR	R	Y	W
1/8	•	•	•	x	x	•	x	•	x	•	x	•	•	•
04M/5/32	•	•	•	x	•	•	•	•	x	•	•	•	•	•
3/16	•	•	•	x	x	x	x	x	x	x	x	•	•	•
1/4	•	•	•	x	•	•	•	•	x	•	•	•	•	•
08M/5/16	•	•	•	x	x	•	•	•	x	•	•	•	•	•
3/8	•	•	•	x	•	•	•	•	x	•	•	•	•	•
1/2	•	•	•	x	•	•	•	•	•	•	x	•	•	•
9/16	•	•	•	x	x	x	x	x	x	x	x	x	x	x
5/8	•	•	•	x	x	x	x	x	x	x	x	x	x	x
3/4	•	•	•	x	x	•	x	x	x	•	x	•	•	•
6MM	•	•	•	x	x	•	•	•	x	•	•	•	•	•
10MM	•	•	•	x	x	•	x	•	x	•	x	•	•	•
12MM	•	•	•	x	x	•	x	•	x	•	x	•	•	•
16MM	•	•	•	x	x	•	x	•	x	•	x	•	•	•

BK = Black C = Clear CB = Clear Blue CG = Clear Green CR = Clear Red  
 G = Green GY = Gray LB = Light Blue LG = Light Green NB = Navy Blue  
 OR = Orange R = Red Y = Yellow W = White

### Features

- Strong
- Lightweight
- Flexible
- Abrasion Resistant
- Heat & Cold Resistant
- Chemical Resistant
- Kink Resistant
- NSF 51® Certified

### Specifications

- Temperature Range:  
-40°F To +160°F
- Hardness: Shore A 98
- Vacuum Rating:  
To 28" Hg
- Tolerances:  
1/8" - 1/2" O.D. +/- .005  
9/16" - 3/4" O.D. +/- .006
- RoHS Compliant

### Applications

- Pneumatic Tools
- Pneumatic Piping
- Vacuum
- Laboratories
- Robotics
- Motion Control
- Instrumentation
- Agriculture
- Lube Lines
- Painting Systems
- Food & Beverage



**Fractional Sizes**

Size	Part number	O.D. (IN)	I.D. (IN)	Wall Thickness (IN)	Bend Radius (IN)	W.P. @ 70° F (PSI)	3:1 Burst Pressure	Package Length	Package Weight (lbs)
1/8"	PU18A_	.125	.062	.031	.200	240	720	100'	.50
	PU18B_	.125	.062	.031	.200	240	720	250'	1.25
	PU18C_	.125	.062	.031	.200	240	720	500'	2.50
	PU18D_	.125	.062	.031	.200	240	720	1000'	5.00
4mm 5/32"	PU04M/532A_	4mm,5/32	.093	.031	.250	200	600	100'	.70
	PU04M/532B_	4mm,5/32	.093	.031	.250	200	600	250'	1.75
	PU04M/532C_	4mm,5/32	.093	.031	.250	200	600	500'	3.50
	PU04M/532D_	4mm,5/32	.093	.031	.250	200	600	1000'	7.00
	PU04M/532E_	4mm,5/32	.093	.031	.250	200	600	25M	.57
	PU04M/532F_	4mm,5/32	.093	.031	.250	200	600	100M	2.30
3/16"	PU316A_	.187	.125	.031	.339	150	450	100'	1.01
	PU316B_	.187	.125	.031	.339	150	450	250'	2.53
	PU316C_	.187	.125	.031	.339	150	450	500'	5.05
	PU316D_	.187	.125	.031	.339	150	450	1000'	10.10
1/4"	PU14A_	.250	.156	.047	.476	180	540	100'	1.50
	PU14B_	.250	.156	.047	.476	180	540	250'	3.75
	PU14C_	.250	.156	.047	.476	180	540	500'	7.50
	PU14D_	.250	.156	.047	.476	180	540	1000'	15.00
8mm 5/16"	PU08M/516A_	8mm,5/16	.187	.063	.594	175	525	100'	2.60
	PU08M/516B_	8mm,5/16	.187	.063	.594	175	525	250'	6.50
	PU08M/516C_	8mm,5/16	.187	.063	.594	175	525	500'	13.00
	PU08M/516E_	8mm,5/16	.187	.063	.594	175	525	25M	2.13
	PU08M/516F_	8mm,5/16	.187	.063	.594	175	525	100M	8.53
3/8"	PU38A_	.375	.250	.063	1.000	150	450	100'	3.40
	PU38B_	.375	.250	.063	1.000	150	450	250'	8.50
	PU38C_	.375	.250	.063	1.000	150	450	500'	17.00
	PU38D_	.375	.250	.063	1.000	150	450	1000'	34.00
1/2"	PU12A_	.500	.328	.086	1.102	150	450	100'	5.10
	PU12B_	.500	.328	.086	1.102	150	450	250'	4.18
	PU12C_	.500	.328	.086	1.102	150	450	500'	8.36
9/16"	PU916A_	.562	.375	.093	1.142	140	420	100'	7.50
	PU916B_	.562	.375	.093	1.142	140	420	250'	18.75
5/8"	PU58A_	.625	.406	.109	1.375	150	450	100'	9.50
	PU58B_	.625	.406	.109	1.375	150	450	250'	23.75
3/4"	PU34A_	.750	.500	.125	1.500	140	420	100'	14.90
	PU34B_	.750	.500	.125	1.500	140	420	250'	37.25

\_ Insert color designation into part number when ordering.

Surethane™ NSF 51® Polyurethane metric sizes on page 14

**Metric Sizes**

Size	Part number	O.D. (mm)	I.D. (mm)	Wall Thickness (mm)	Bend Radius (mm)	W.P. @ 70° F (PSI)	3:1 Burst Pressure	Package Length	Package Weight (lbs)
6mm	PU06MA_	6.0	4.0	1.000	12	180	540	100'	1.30
	PU06MB_	6.0	4.0	1.000	12	180	540	250'	3.24
	PU06MC_	6.0	4.0	1.000	12	180	540	500'	6.48
	PU06MD_	6.0	4.0	1.000	12	180	540	1000'	13.00
	PU06ME_	6.0	4.0	1.000	12	180	540	25M	1.07
	PU06MF_	6.0	4.0	1.000	12	180	540	100M	4.28
10mm	PU10MA_	10.0	6.5	1.750	25	150	450	100'	3.90
	PU10MB_	10.0	6.5	1.750	25	150	450	250'	9.75
	PU10MC_	10.0	6.5	1.750	25	150	450	500'	19.50
	PU10MD_	10.0	6.5	1.750	25	150	450	1000'	39.00
	PU10ME_	10.0	6.5	1.750	25	150	450	25M	3.23
	PU10MF_	10.0	6.5	1.750	25	150	450	100M	12.76
12mm	PU12MA_	12.0	8.0	2.000	28	150	450	100'	5.30
	PU12MB_	12.0	8.0	2.000	28	150	450	250'	13.25
	PU12MC_	12.0	8.0	2.000	28	150	450	500'	26.50
	PU12ME_	12.0	8.0	2.000	28	150	450	25M	4.39
	PU12MF_	12.0	8.0	2.000	28	150	450	100M	17.34
	16mm	PU16MA_	16.0	11.0	2.500	30	150	450	100'
PU16MB_		16.0	11.0	2.500	30	150	450	250'	23.75
PU16ME_		16.0	11.0	2.500	30	150	450	25M	7.79
PU16MF_		16.0	11.0	2.500	30	150	450	100M	31.16

\_ Insert color designation into part number when ordering.

\*4mm O.D. & 8mm O.D. found on page 13

**Tubing & Hose Cutter**



TC-14



TC-100

Part Number	Description
TC-14	Small Tubing Cutter, Blue, 1/8" - 1/2"
TC-100	Large Hose Cutter, Black, Up to 2"

# Vinyl-Flex™ PVC NSF 61® Tubing

# ATP



ATP Vinyl-Flex™ PVC NSF 61® is suitable for general, low-pressure, industrial applications for the conveyance of liquids and semi solids. It also complies with FDA regulations and is NSF 61® compliant for use in potable water and food and beverage applications. Although it is not primarily intended for use in higher pressure applications, it does provide good chemical resistance, is lightweight, flexible and economically priced.

## Part Numbering System

**PVC 18 14 A NA**

Polyvinylchloride  
Tubing I.D.  
Tubing O.D.  
Package Length  
Color: Clear with  
Blue Tint

## Package Lengths

A = 100'    2A = 50'

## Colors Available

Clear with Blue Tint

Size	Part number	I.D. (IN)	O.D. (IN)	W.P. @ 70° F (PSI)	Package Length	Package Weight (lbs)
1/8"	PVC18-14ANA	.125	.250	65	100'	2.2
3/16"	PVC316-14ANA	.187	.250	50	100'	1.17
	PVC316-516ANA	.187	.313	55	100'	2.69
	PVC316-38ANA	.187	.375	60	100'	3.75
1/4"	PVC14-38ANA	.250	.375	55	100'	3.35
	PVC14-716ANA	.250	.438	55	100'	5.53
	PVC14-12ANA	.250	.500	60	100'	7.89
5/16"	PVC516-716ANA	.312	.438	50	100'	3.88
	PVC516-12ANA	.312	.500	55	100'	6.37
	PVC516-916ANA	.312	.563	60	100'	9.22
3/8"	PVC38-12ANA	.375	.500	45	100'	4.65
	PVC38-916ANA	.375	.563	50	100'	7.47
	PVC38-58ANA	.375	.625	55	100'	10.65
7/16"	PVC716-916ANA	.437	.563	35	100'	6.6
1/2"	PVC12-58ANA	.500	.625	30	100'	6.0
	PVC12-1116ANA	.500	.688	40	100'	9.50
	PVC12-34ANA	.500	.750	45	100'	13.07
5/8"	PVC58-34ANA	.625	.750	30	100'	7.10
	PVC58-1316ANA	.625	.813	35	100'	12.32
	PVC58-78ANA	.625	.875	40	100'	15.72
3/4"	PVC34-1ANA	.750	1.000	35	100'	18.37
	PVC34-54ANA	.750	1.250	45	100'	42.35
7/8"	PVC78-118ANA	.875	1.125	30	100'	33.10
1"	PVC1-54ANA	1.000	1.250	25	100'	23.99
	PVC1-138ANA	1.000	1.375	30	100'	37.0
1 1/4"	PVC54-64ANA	1.250	1.500	20	100'	29.0
	PVC54-1582ANA	1.250	1.625	30	50'	44.60
1 1/2"	PVC64-1782ANA	1.500	1.875	30	50'	52.7

## Features

Lightweight  
Flexible  
Food Grade  
Clear with Blue Tint  
Phthalate Free

## Specifications

Temperature Range:  
+15°F To +150°F  
Hardness:  
Shore A 73 PVC  
Meets FDA Requirements  
USP Class VI Rated  
Materials  
NSF 61® Certified  
RoHS Compliant  
Reach  
Prop 65  
ASTMF930-03  
EN-71  
PAHS

## Applications

Beverage Dispensing  
Drain  
Potable Water  
Laboratory  
Low Pressure Air  
Distilled Water Transfer  
Light Vacuum

# PVC NSF 61<sup>®</sup> Hose

# ATP



**ATP NSF 61<sup>®</sup> PVC** Hose is manufactured with a polyester spiraled yarn allowing for the hose to be used in higher working pressure applications. It also complies with FDA regulations, and is Phthalate Free and NSF 61<sup>®</sup> compliant for use in potable water and food beverage applications.

It provides good chemical resistance, is lightweight, flexible and economically priced.

## Part Numbering System

**PVCBH 18 14 A NA**

Polyvinylchloride  
Hose Tubing I.D.  
Tubing O.D.  
Package Length  
Color: Clear with  
Blue Tint

## Package Lengths

A = 100'

## Colors Available

Clear with Blue Tint

## Fractional Sizes

Size	Part number	I.D. (IN)	O.D. (IN)	W.P. @ 70° F (PSI)	Package Length	Package Weight (lbs)
3/16"	PVCBH316-375ANA	.187	.375	250	100'	4.41
1/4"	PVCBH14-438ANA	.250	.438	250	100'	5.84
5/16"	PVCBH516-531ANA	.313	.531	250	100'	7.39
3/8"	PVCBH38-594ANA	.375	.594	225	100'	9.02
1/2"	PVCBH12-34ANA	.500	.750	200	100'	13.33
5/8"	PVCBH58-891ANA	.625	.891	200	100'	15.93
3/4"	PVCBH34-103ANA	.750	1.030	150	100'	20.72
1"	PVCBH1-1.3ANA	1.000	1.300	125	100'	29.08
1 1/4"	PVCBH54-1.62ANA	1.250	1.62	100	100'	45.50
1 1/2"	PVCBH64-1.938ANA	1.50	1.938	100	100'	63.49
2"	PVCBH2-2.492ANA	2.000	2.492	75	100	92.59

## Metric Sizes

Size	Part number	I.D. (mm)	O.D. (mm)	W.P. @ 70° F (PSI)	Package Length	Package Weight (lbs)
4mm	PVCBH4M-9MANA	4.0	9.0	250	100'	4.41
6mm	PVCBH6M-11MANA	6.0	11.0	250	100'	5.84
8mm	PVCBH8M-13.5MANA	8.0	13.5	250	100'	7.39
10mm	PVCBH10M-16MANA	10.0	16.0	225	100'	9.55
12mm	PVCBH12M-18MANA	12.0	18.0	200	100'	13.96
19mm	PVCBH19M-26MANA	19.0	26.0	150	100'	20.72

## Features

Lightweight  
Flexible  
Clear with Blue Tint  
Phthalate Free

## Specifications

Temperature Range:  
+15°F To +150°F  
Hardness:  
Shore A 73 PVC  
Meets FDA Requirements  
USP Class VI Rated  
Materials  
NSF 61<sup>®</sup> Certified  
RoHS Compliant  
Reach  
Prop 65  
ASTMF930-03  
EN-71  
PAHS

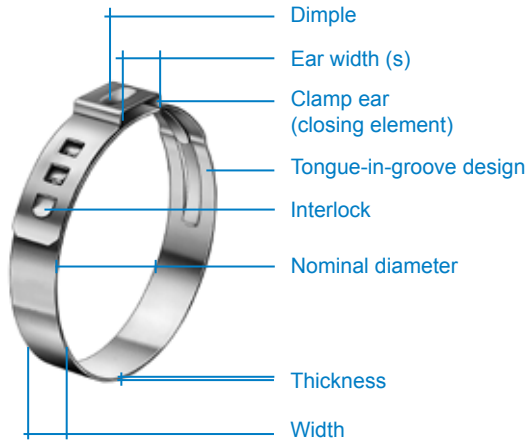
## Applications

Beverage  
Drain  
Potable Water  
Laboratory  
Low Pressure Air  
Distilled Water Transfer  
Light Vacuum





**Beverage Industry**  
**Stepless® Ear Clamps**  
**Product Group 167**



**Narrow band:** concentrates transmission of clamping force, less weight  
**Stepless over 360°:** uniform compression or uniform surface pressure  
**Clamp ear:** compensates for component tolerances, adjustable surface pressure

**Dimple:** increases clamping force, spring-effect compensates for changes in diameter due to thermal expansion

**Specially formed strip edges:** reduced risk of damage to parts being clamped

**Material:** 167 Stainless Steel, Material no. 1.4301/UNS S30400

Part Number	Size Ref. mm	Range (mm) Close-Open	Range (inch) Close-Open
<b>Clamp Band Dimension: 5 x 0.5 mm</b>			
16700001	7.0	5.8 - 7.0	.228 - .276
16700002	8.0	6.8 - 8.0	.268 - .315
16700003	8.7	7.0 - 8.7	.276 - .343
16700004	9.5	7.8 - 9.5	.307 - .374
16700005	10.0	8.3 - 10.0	.327 - .394
16700006	10.5	8.8 - 10.5	.346 - .413
16702492	10.9	9.2 - 10.9	.362 - .429
16700007	11.3	9.6 - 11.3	.378 - .445
16700008	11.8	10.1 - 11.8	.398 - .465
<b>Clamp Band Dimension: 7 x 0.6 mm</b>			
16700009	12.3	9.8 - 12.3	.386 - .484
16702493	12.8	10.3 - 12.8	.406 - .504
16700010	13.3	10.8 - 13.3	.425 - .524
16700011	13.8	11.3 - 13.8	.445 - .543
16700012	14.0	11.5 - 14.0	.453 - .551
16700013	14.5	12.0 - 14.5	.472 - .571
16700014	14.8	12.3 - 14.8	.484 - .583
16700015	15.3	12.8 - 15.3	.504 - .602
16700016	15.7	13.2 - 15.7	.520 - .618
16702494	16.2	13.7 - 16.2	.539 - .638
16700017	17.0	14.5 - 17.0	.571 - .669
16700020	18.5	15.3 - 18.5	.602 - .728
16702498	19.8	16.6 - 19.8	.654 - .780
16700024	21.0	17.8 - 21.0	.701 - .827
16700026	22.6	19.4 - 22.6	.764 - .890
16700029	24.1	20.9 - 24.1	.823 - .949
16700033	27.1	23.9 - 27.1	.941 - 1.067
16700035	28.6	25.4 - 28.6	1.000 - 1.126
16700037	30.1	26.9 - 30.1	1.059 - 1.185



# Manual Installation Tools



Part Number	Description
14100082	Standard Jaw Pincers
14100083	Side Jaw Pincers
14100329	Economy Pincers

## Installation Examples

Position an properly-sized ear clamp on the hose fitted with a hose stem. close clamp ear fully.



When space is restricted, use a side jaw pincers and hold it parallel to the hose during closure



Using standard jaw pincer for Ear Clamps



To remove a Stepless Ear Clamp, grasp the strip end with the pincer and pull it away

## Clamp/Tool Kit



Part Number	Description
18500075	Beverage Clamp Kit

Part Number	18500075 Kit Contents:	Description
14100083	01 Each	Side Jaw Pincers
16700003	50 Each	8.7 mm Clamps
16700006	50 Each	10.5 mm Clamps
16700007	50 Each	11.3 mm Clamps
16700010	50 Each	13.3 mm Clamps
16700013	50 Each	14.5 mm Clamps
16700017	50 Each	17.0 mm Clamps

# Chemical Resistance

	Polyurethane	Nylon12	Polyethylene	PVC	PTFE	Weld Tubing Cover
<b>Acids</b>						
Acetic, 3n	B	E	A	A	A	A
Boric, 4%	B	A	A	A	A	A
Chromic, 3n	D	E	A	A	A	—
Citronic, 3n	B	—	A	A	A	—
Formic, 3n	D	A	A	A	A	A
HC1, 3n	A	E	A	A	A	—
Lactic, 3n	C	B	A	A	A	A
Nitric, 3n	D	E	A	A	A	B
Phosphoric, 3n	D	D	A	A	A	A
Sulfuric, <20%	A	B	A	A	A	A
Sulfuric, >20%	B	C	B	A	A	A
<b>Alkalines</b>						
Ammonia, 3n	A	A	—	A	A	A
Potassium Hydroxide, 3n	A	—	A	A	A	A
Sodium Hydroxide, <20%	A	A	A	A	A	A
Sodium Hydroxide, >20%	C	A	—	A	A	A
<b>Aqueous Solution</b>						
Aluminum Chloride, 10%	B	—	A	A	A	A
Ammonium Chloride, 10%	B	A	A	A	A	A
Bleaching Agent, 40%	A	E	—	—	A	A
Bleaching Agent, 100%	B	E	—	—	A	—
Calcium Chloride, 40%	B	A	A	—	A	—
Caustic Soda, 10%	A	A	—	—	A	—
Ferric Chloride, 10%	B	—	A	A	A	A
Hydrogen Peroxide, 3%	A	A	A	A	A	A
Magnesium Chloride, 30%	B	—	A	A	A	—
Potassium Chloride, 40%	B	A	A	—	A	—
Potassium Dichromate, 10%	B	C	A	—	A	—
Potassium Permanganate, 5%	D	D	A	—	A	—
Sea Water	A	A	A	A	A	—
Sodium Bisulfate, 10%	B	A	A	—	A	—
Sodium Chloride, 10%	B	B	A	—	A	—
Sodium Hypochlorite, PH 13	A	B	A	—	A	A
<b>Fuels</b>						
ASTM Fuel A	A	—	—	B	A	—
ASTM Fuel B	C	—	—	C	A	—
ASTM Fuel C	C	—	—	—	A	—
Diesel Fuel	B	A	—	B	A	D
Gasohol (10-15% Methanol)	D	—	—	—	A	—
High-test (Super) Gasoline	D	A	—	—	A	—
Kerosene	A	V	—	B	A	D
<b>Oils</b>						
ASTM Oil #1	A	—	—	B	A	—
ASTM Oil #2	A	—	—	—	A	—
ASTM Oil #3	A	—	—	B	A	—
Brake Fluid (ATE or ATS)	D	A	—	—	A	—
Gear Box Oil (SAE 90)	A	—	—	—	A	—
Hydraulic Fluid	B	—	—	—	A	—
Hydraulic/Water Emulsion	B	—	—	—	A	—
Mineral Oil	A	A	C	A	A	—
Motor Oil	A	A	B	—	A	—
Paraffin Oil	A	A	—	A	A	—
Power Steering Fluid	B	—	—	—	A	—
Skydrol® 500 Oil	D	—	—	—	A	B

	Polyurethane	Nylon12	Polyethylene	PVC	PTFE	Weld Tubing Cover
<b>Greases</b>						
Calcium Grease	A	—	—	—	A	—
Sodium Grease	A	—	—	—	A	—
Teflon® Grease	A	—	—	—	A	—
<b>Miscellaneous</b>						
Diocetyl Phthalate (DOP)	A	—	C	C	A	—
Ethylene Chloride	B	C	D	—	A	D
Ethylene Glycol/Water 50/50	B	—	—	A	A	A
Household Cleaner	B	—	—	—	A	—
Naptha	A	—	A	B	A	D
Silage (Silo) Juice	B	—	—	—	A	—
Natural Perspiration	A	—	—	—	A	—
Tincture of Iodine	D	—	—	—	A	—
Tricresyl Phosphate	D	—	—	C	A	—
<b>Solvents</b>						
Acetone	D	A	D	C	A	B
Aniline	D	B	B	B	A	—
Benzene	D	A	D	C	A	D
Benzyl Alcohol	E	—	—	—	A	B
Butane	B	A	—	—	A	B
Butyl Acetate	D	A	B	C	A	—
Butyl Alcohol	D	A	A	—	A	—
Carbon Tetrachloride	D	A	D	C	A	D
Chlorobenzene	D	C	D	C	A	D
Chloroform	D	C	D	C	A	D
Cyclohexane	C	A	—	A	A	D
Ethanol	C	—	B	—	A	B
Ether	C	A	—	—	A	B
Ethyl Acetate	D	A	C	C	A	A
Freon 11, 12, 22	C	—	—	—	A	D
Glycerine & Glycol	A	A	B	A	A	A
Heptane	B	A	D	B	A	—
Hexane	B	A	—	B	A	—
Isopropyl Alcohol	C	A	—	—	A	—
Methanol	C	—	B	—	A	A
Methyl Acetate	D	—	—	C	A	—
Methyl Ethyl Ketone	C	A	—	C	A	—
Methyl Glycol	D	—	—	—	A	—
Methylene Chloride	D	E	D	C	A	—
N-Methyl Pyrrolidone	E	—	—	—	A	—
Perchloroethylene	D	—	—	C	A	—
Petroleum	B	A	—	—	A	—
Pyridine	E	A	—	—	A	B
Tetrachloroethylene	D	—	—	C	A	—
Tetrahydrofuran	D	B	D	C	A	B
Toluene	D	A	D	C	A	D
Trichloroethylene	D	C	D	C	A	D
Turpentine (Pine Oil)	B	A	C	B	A	B
Xylene	D	A	—	C	A	D

Teflon® is a registered trademark of the Dupont Corporation.  
Skydrol® is a registered trademark of Monsanto Company.

## WARNING:

This table is a general guide based on our testing. Although every effort was made to ensure its accuracy, we cannot guarantee your results due to variables in temperature and application. Therefore, no warranty is expressed or implied, and the user assumes all risk and liability.

- A . . . . . Excellent (0-3%)
- B . . . . . Good (4-15%)
- C . . . . . Fair (16-30%)
- D . . . . . Poor (>30%)
- E . . . . . Dissolves



**ATP has developed the latest technology in tubing, hoses and pneumatic accessories. In keeping with current market demands, our products offer ergonomics and safety to help support assembly and automation applications.**



#### **Spiral Recoil Hoses**

Techniblu™, Technithane™ and our industry exclusives—the “Strong™” and “Strong-Plus™.” A tighter coil ID gives our Strong hoses better memory retention. The “Plus” is a lightweight, ergonomic, hose whip providing surface protection and operator comfort. Custom models are our specialty.



#### **Tubing - PTFE, FEP & Nylon**

Only the highest-quality materials go into manufacturing our tubing. Over 50 stock sizes and 12 stock colors in both fractional and metric dimensions. Different Compounds and hardness are available upon request.



#### **Technibond®**

Thermally-bonded, polyurethane tube groupings available in straight and spiral configurations. Wire can be added to carry electric. Custom configurations welcome with no minimum quantities.



#### **ARMOR-AIR™ Contractors Air Hose**

Lightweight, flexible and much more abrasion-resistant than traditional rubber air hoses. A must-have for contractors, and anyone who owns an air compressor. Available with varying hardness and many colors. Reinforced with nylon for greater working pressures. Standard & custom assemblies and spirals.



#### **Free Angle® Swivel Fitting**

The rubber boot has been replaced by an exclusive steel cover giving it a much longer service life. Our two rotation points make this superior to the imitators. The ergonomic, patented 360° circular rotation and 45° angled rotation makes this fitting indispensable for air tool and assembly applications.



#### **Technifit™ Pneumatic Push-To-Connect Fittings**

All are made to extremely tight tolerances and work with ATP tubing to eliminate leaks. Our variety of fittings represents a large selection of the most common models, sizes and materials. Additional models and sizes-including stainless materials and Viton® seals are available as special order.



#### **Oetiker® Clamps**

The Oetiker® Clamp creates a spring effect when the hose material expands or contracts in response to thermal or mechanical influences such as temperature, vibration, etc. Single ear, double ear and stepless in both carbon steel and stainless steel.



#### **Brass Fittings**

ATP offers a full line of brass fittings to meet your connection needs. We offer hose fittings, hose barbs, pipe fittings, and mufflers in both fractional and metric sizes. Available in NPT or BSPT.



#### **Oetiker® Swing Couplers**

ATP carries and recommends Oetiker® Swing Couplings. The coupling design allows a full flow with safety vent feature. Use Oetiker® Swing Couplings with ATP Free Angle Swivel Fittings. The ultimate pairing where safety and ergonomics are concerned.



#### **Blow Guns**

ATP offers a wide variety of blow guns ranging from an economical safety blow gun to rugged high end ultra quiet blow guns, all available with various interchangeable nozzles.

*Viton is a registered trademark of the E.L. DuPont Co.*

**PO Box 335 12740 State Route 4  
Milford Center, Ohio 43045-0335 USA**

**Phone: 937.349.4055  
Fax: 937.349.4155**

**E-mail: [info@atp4pneumatics.com](mailto:info@atp4pneumatics.com)  
[www.atp4fluid.com](http://www.atp4fluid.com)**

ATP reserves the right to change product specifications without notice. © Copy Right Effective February 2012  
Advanced Technology Products, All Rights Reserved.